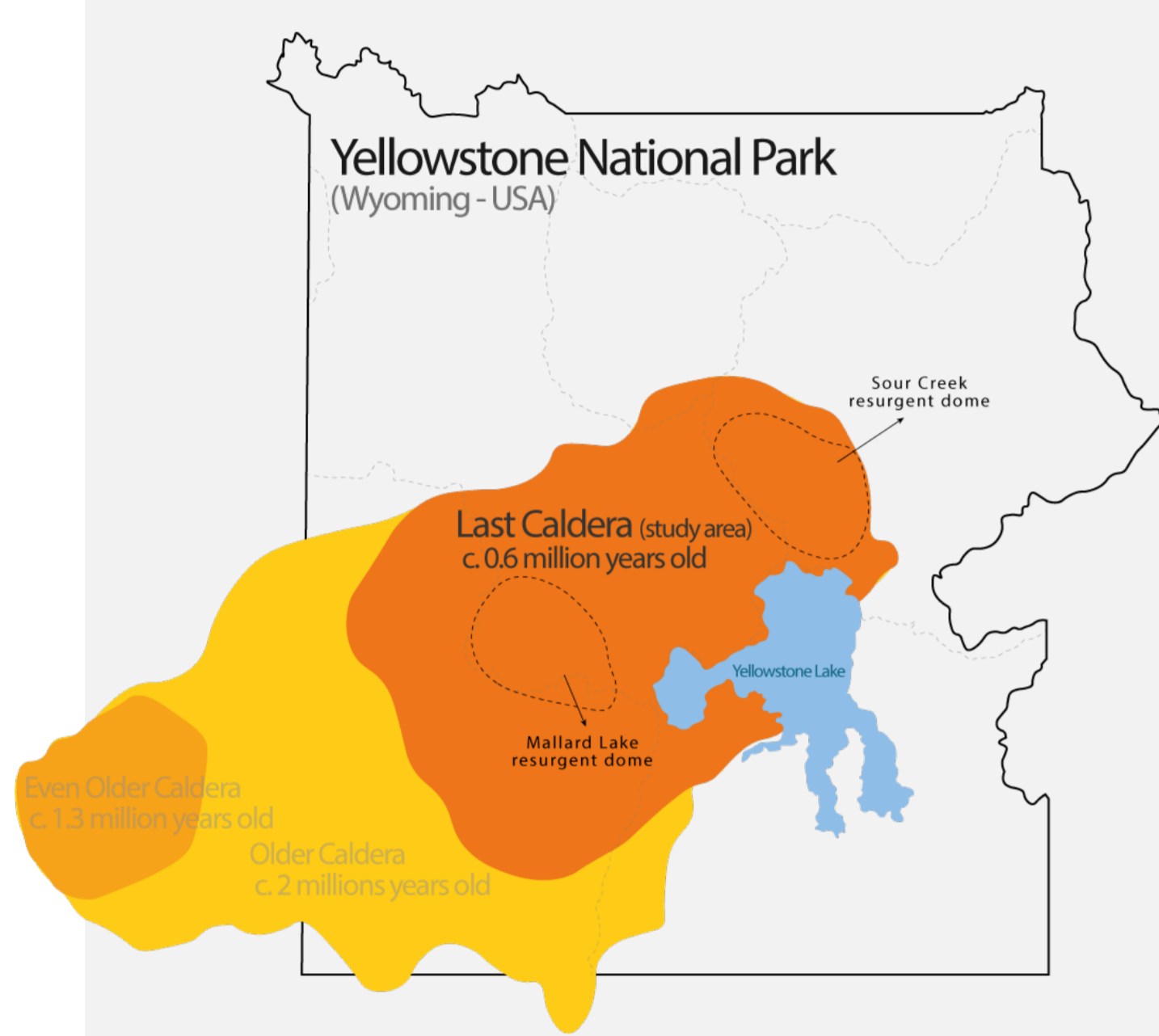
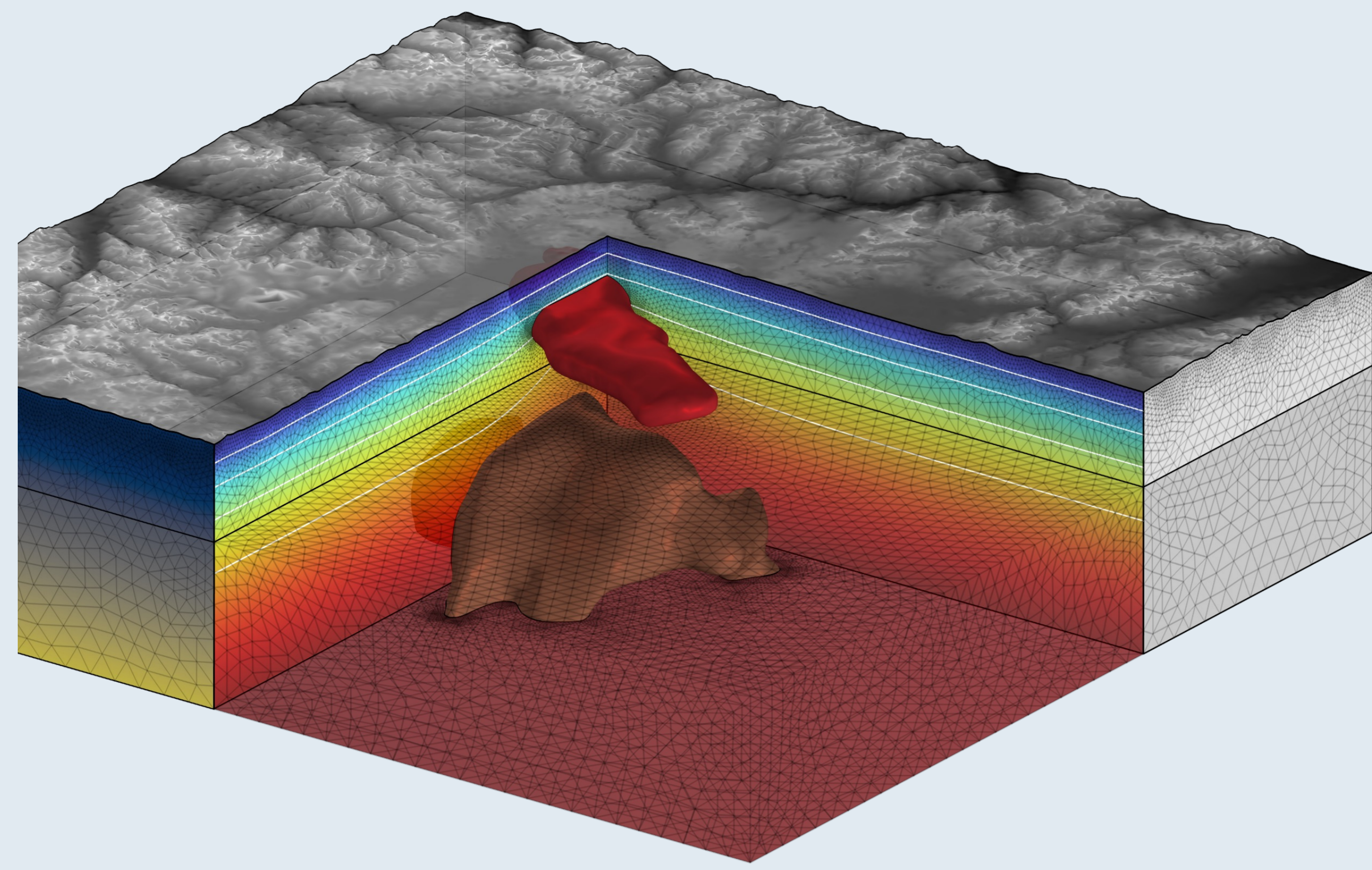


Thermo-Rheological Modelling of the Yellowstone Caldera: Insights into Volcanic Processes

There is growing interest among geoscientists in modelling the thermal state of volcanic and geothermal regions. The Yellowstone Caldera, the world's most famous supervolcano, represents a perfect laboratory for testing effective modelling approaches in such tectono-magmatic environments.

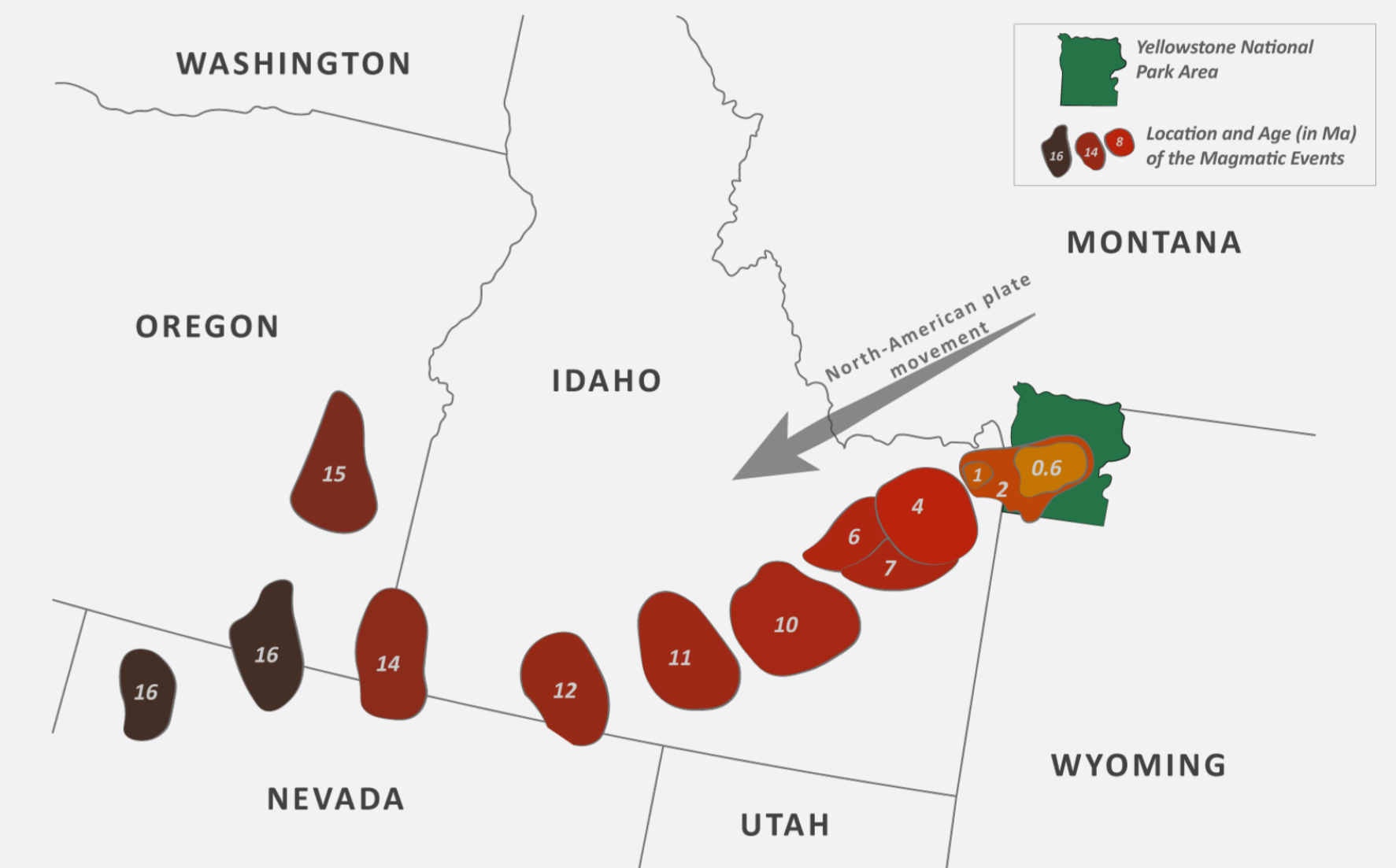
Perrini M.¹, Gola G.², Tizzani P.¹, Fedi F.³, Brahmi M.^{1,3}, Castaldo R.¹

1. Istituto per il Rilevamento Elettromagnetico dell'Ambiente (IREA), Consiglio Nazionale delle Ricerche (CNR), Napoli, Italia.
2. Istituto di Geoscienze e Georisorse (IGG), Consiglio Nazionale delle Ricerche (CNR), Torino, Italia.
3. Dipartimento di Scienze della Terra, dell'Ambiente e delle Risorse (DISTAR), Università degli Studi di Napoli Federico II, Napoli, Italia.



Introduction & Goals

The **Yellowstone hotspot** is responsible for a series of volcanic eruptions over millions of years, creating the Yellowstone Caldera and other volcanic features [1]. Our **goal** is to investigate the **thermo-rheological** state of Yellowstone crust, focusing on the interactions between thermal dynamics and crustal mechanics, which are essential for evaluating volcanic activity, **geothermal potential**, and the region's long-term stability.



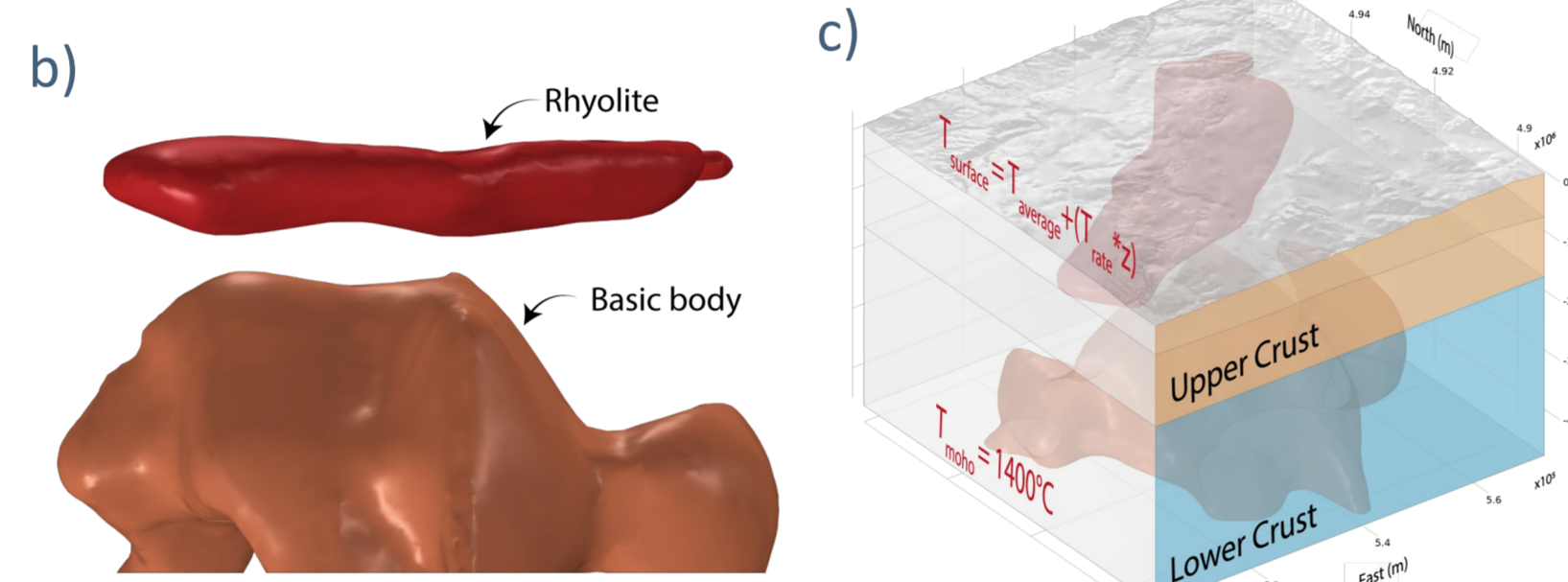
a) MODELLING WORKFLOW

Curie Surface Mapping & Geometry set-up
 • From Aeromagnetic data to Curie surface at depth
 • Integration of geological and geophysical information for constructing model geometry

3D Conductive Thermal Modelling
 Given the large scale of the study area, a conductive approximation is appropriate, as it accurately represents the dominant heat transfer process over vast regions

Thermal Parameters Optimization Process
 Iterative Approach aimed at minimize the residuals between MODELLED and MEASURED data

Rheological Model
 • Comprehensive modelling of brittle-ductile transition
 • Correlation with earthquake distribution (seismicity cut-off)



Parameter	Symbol	Law	Upper Crust		Lower Crust	Rhyolite	Basic Body
			scenario 1	scenario 2			
Thermal conductivity (scenario 1)	$k_x = k_y = k_z$ [W/(m·K)]	$k(T) = k_0 \left(\frac{T - T_0}{T_0} \right)^n$ (Sonderegger, 1992)	2.1*	2.1*	4	2.4	1.6
Thermal conductivity (scenario 2)	$k_x = k_y = k_z$ [W/(m·K)]	$k_x = 1.499 \times 10^{-4} K^2 T_x + 2.003 \times 10^{-4} T_x + 1.4793$ (Sonderegger, 1992)	2.2*	1.2*	4	2.4	1.6
Heat capacity	c_p [J/(kg·K)]	/	900	1000	840	950	950
Density	ρ [kg m ⁻³]	/	2500	2800	2500	2900	2900
Radioactive Heat production	HP_{rad} [μ W m ⁻³]	$A(t) = A_0 \cdot e^{-\lambda t}$ (Lambert, 1970)	4.0*	4.5*	/	/	/
Additional Heat production (scenario 1)	HP [μ W m ⁻³]	/	17.4*	19.4*	/	/	/
Additional Heat production (scenario 2)	HP [μ W m ⁻³]	/	8.0*	/	/	/	/
Magnetic Heat production	HP [μ W m ⁻³]	/	/	/	/	1.45*	19.0*
Power law creep	A [MPa ⁿ ·s ⁻¹]	/	$1.5 \cdot 10^7$	$3.2 \cdot 10^7$	$1.3 \cdot 10^7$	$1.4 \cdot 10^7$	$1.4 \cdot 10^7$
	n []	/	2.4	3.2	2.4	4.2	4.2
	Q [kJ/mol]	/	220	270	220	445	445

FIGURE 1. a) Modelling workflow; b) 3D View of the magmatic system [3] and c) FE geometry domains; d) Table of physical parameters and constitutive laws.

Methodology

The study began with Curie surface mapping and the set-up of magmatic reservoir geometry. Aeromagnetic data was used to determine the Curie surface at depth, corresponding to a temperature of 573°C. This information was combined with geological [2] and geophysical (seismic tomography, [3]) data to construct the model geometry. Subsequently, two 3D conductive thermal models were developed, investigating different scenarios characterized by: (1) homogeneous upper crustal thermal conductivity and an additional 'additional' heat source; (2) heterogeneous thermal conductivity.

Results

For both physical scenarios, the thermal parameters were optimized to determine the best finite element (FE) model configuration. Our thermal analysis demonstrated that, in order to align with both the **regional surface heat flow (SHF)** estimate [4] and the minimum Root Mean Square Error (RMSE), the optimal setup includes additional heat production diffused within the upper crust. This could be due to the presence of **smaller-scale magmatic bodies** in the upper crust that are unresolved by tomography [3]. Finally, a comprehensive rheological model of the studied crustal section was developed, correlating the model with the seismicity cut-off. A minimum **strain rate of 1E-8 s⁻¹** was applied to match the observed seismicity distribution (1974–2024).

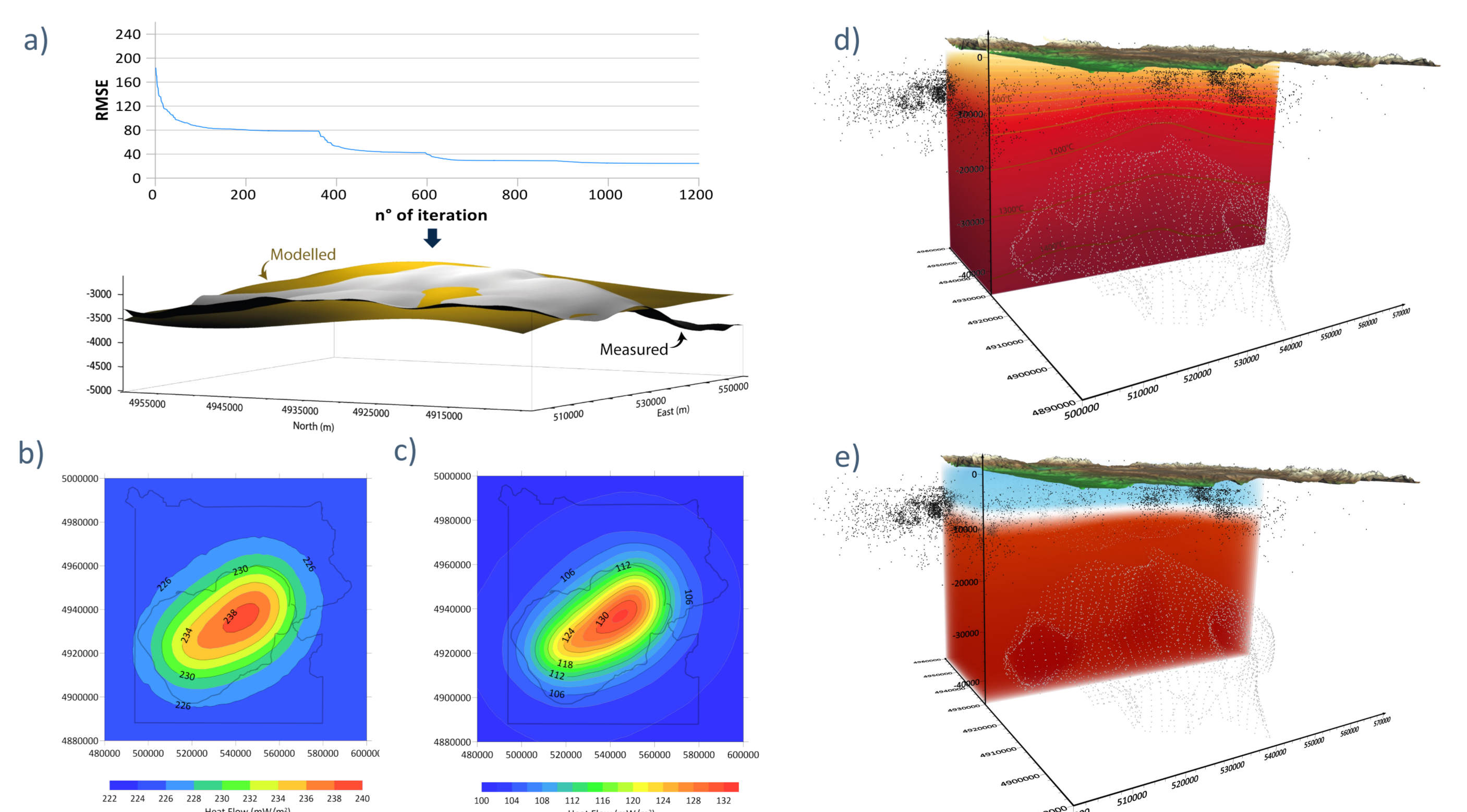


FIGURE 2. - a) Composite picture illustrating the Optimization Process – Scenario 1; b) Modelled SHF for Scenario 1 and c) Scenario 2; d) 3D Temperature distribution and the associated e) 3D rheological model.

REFERENCES

- 1.R. L. Christiansen (2001). The Quaternary and pliocene Yellowstone plateau volcanic field of Wyoming, Idaho, and Montana (No. 729-G).
- 2.K. R. DeNosaquo, R. B. Smith, A. R. Lowry (2009). Density and lithospheric strength models of the Yellowstone–Snake River Plain volcanic system from gravity and heat flow data. *Journal of Volcanology and Geothermal Research*, 188(1), 108-127.
- 3.H. H. Huang, F. C. Lin, B. Schmandt, J. Farrell, R. B. Smith, V. C. Tsai (2015). The Yellowstone magmatic system from the mantle plume to the upper crust. *Science*, 348(6236), 773-776.
- 4.R. B. Smith, M. Jordan, B. Steinberger, C. M. Puskas, J. Farrell, G. P. Waite, S. Husen, W. L. Chang, R. O'Connell (2009). Geodynamics of the Yellowstone hotspot and mantle plume: Seismic and GPS imaging, kinematics, and mantle flow. *Journal of Volcanology and Geothermal Research*, 188(1), 26-56.



Acknowledgments

We would like to thank Italian project funded by the call Prin2022PNRR, code p2022p37sn project "Relation Between 3d Thermo-rheological Model And Seismic Hazard For The Risk Mitigation in the Urban Areas Of Southern Italy (TRHAM)", decree of admission to funding - director's decree no. 1409 of 14/09/2023, ERC sector pe10 "earth system science, funded by the European Union - NextGenerationEU.